



2



1



1



C

DavidJames
the estate agent

Radcliffe Gardens, Carlton, Nottingham, NG4 1SB

Guide Price £180,000

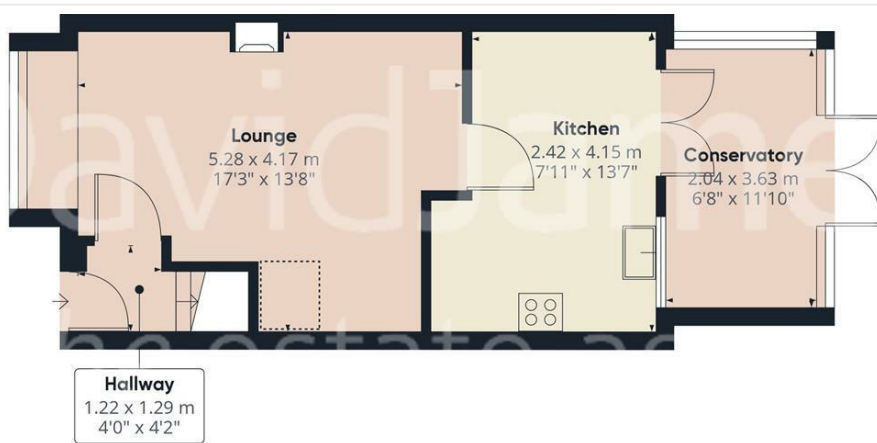
About This Property

GUIDE PRICE £180,000 - £185,000 This charming mid-townhouse in Carlton offers comfortable living with two well-appointed bedrooms, including the master bedroom featuring both fitted and in-built wardrobes. As you enter, you'll be greeted by an entrance hall with laminate flooring leading to a cozy lounge, complete with a bow window and an electric fireplace. The kitchen boasts a tiled floor and an extensive range of units. Beyond, a UPVC double glazed conservatory, with electric underfloor heating and a clear glazed roof leads to the rear garden accessed through French doors. Upstairs there is a modern shower room/WC with a corner shower cubicle and mains shower. With combination gas central heating, UPVC double glazing, a low-maintenance paved rear garden, and the convenience of a garage within a communal block, this property offers a comfortable and convenient lifestyle in a sought-after location.

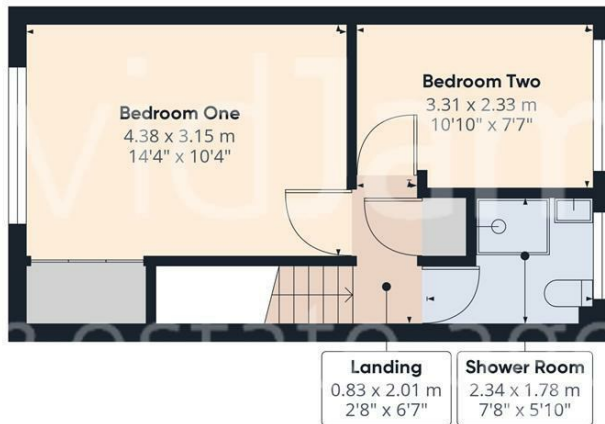
- Mid townhouse
- Two bedrooms, bedroom one with both fitted and in-built wardrobes
- Entrance hall with laminate flooring
- Lounge with bow window and fireplace with electric fire
- Kitchen with tiled floor and fitted with an extensive range of units
- UPVC double glazed conservatory with French doors to the rear garden, tiled floor with electric underfloor heating and clear glazed roof
- First floor shower room/Wc with corner shower cubicle and mains shower
- Combination gas central heating, UPVC double glazing
- Low maintenance paved rear garden
- Garage situated within a communal block







Floor 0



Floor 1



Approximate total area**

71.16 m²
765.93 ft²

Reduced headroom

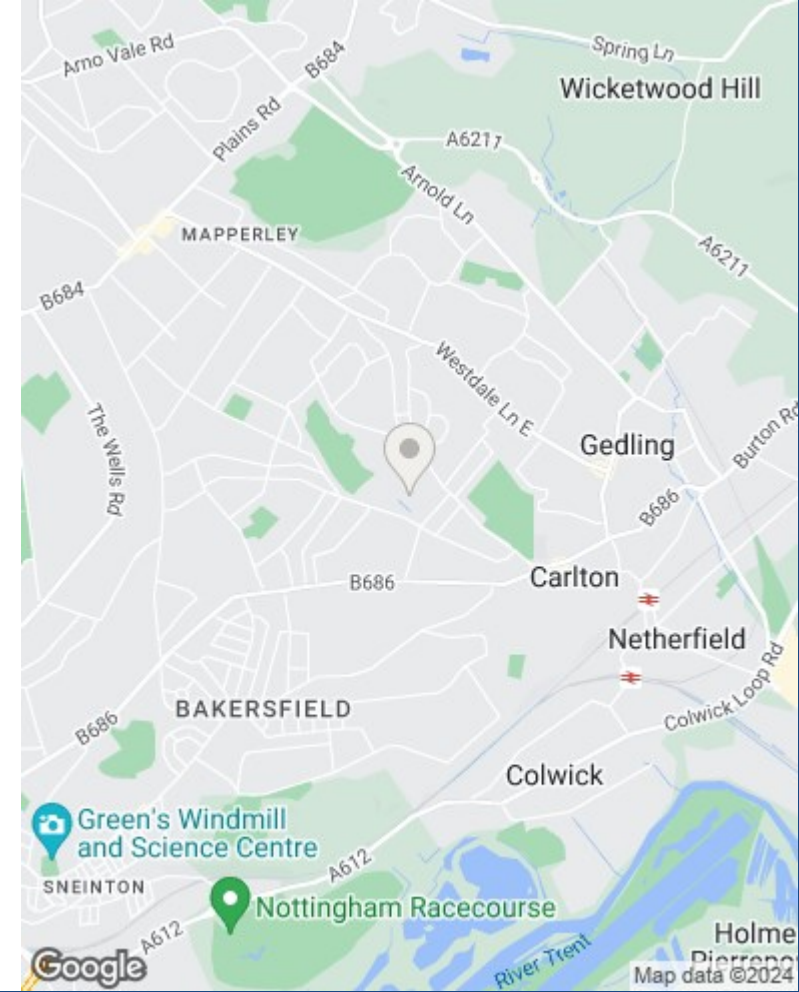
0.83 m²
8.93 ft²

Excluding balconies and terraces

Reduced headroom
(below 1.5m/4.92ft)

While every attempt has been made to ensure accuracy, all measurements are approximate, not to scale. This floor plan is for illustrative purposes only.

GIRAFFE360



These particulars are produced in good faith, are set out as a general guide only and do not constitute any part of a contract. No person in the employment of David James Estate Agents Ltd has any authority to make any representation whatsoever in relation to the property. All services, together with electrical fittings or fitted appliances have NOT been tested. All the measurements given in the details are approximate. Floor plans are for illustrative purposes only and are not drawn to scale. The position and size of doors, windows, appliances and other features are approximate only. The photographs of this property have been taken with a 10mm wide-angle lens. No responsibility can be accepted for any loss or expense incurred in viewing. If you have a property to sell you may wish to take advantage of our free valuation service. David James Estate Agents have established professional relationships with third-party suppliers for the provision of services to Clients. As remuneration for this professional relationship, the agent receives referral commission from the third-party company. David James Estate Agents receives the following commission from each third party supplier on a per referral basis: W A Barnes Ltd: £60 including VAT. All Moves UK Ltd: 18% including VAT of the invoice total (£107 including VAT average). MoveWithUs Limited: £188 including VAT (average).

Council Tax Band: B
Gedling Borough Council
Freehold

DavidJames
the estate agent

David James Estate Agents
317 Carlton Hill, Nottingham, NG4 1GL
t: 0115 987 8957 e: carlton@david-james.com

